

A modern interior space featuring exposed concrete beams and pillars. In the foreground, there are large, bright orange partitions. In the background, a white kitchen area is visible with a wooden countertop, a sink, and a stove. Two potted plants sit on a white shelf. Two red, translucent, hourglass-shaped stools are visible under a white counter. The floor is a light-colored, textured material.

BuzziBack

Product Specification Sheet

This document contains technical
information about the BuzziBack

•BUZZI
SPACE

www.buzzi.space

Wall panel with adhesive tape or magnetic tape on backside

Spice up the back of your cabinets or your walls with the BuzziBack. Fully customizable, this acoustic treatment is available in different colors and tailored sizes. The sound absorbing screen also acts as a pin board.

Design by Sas Adriaenssens

General



BuzziBack

2 layers of BuzziFelt stitched together



Extra layer available in Fabric, Trevira CS, Reflect, Revive 1, Velvet, Clara 2, Remix 3, Hero 2, Tonus 4, Arda, Memory 2

Stitch: on Felt / Fabric: Always OffWhite (except for BuzziBack OffWhite, Natural, Ivory > Stitch Anthracite)



Min. W 40 cm | 15.75" H 80 cm | 31.50"

Max. W 120 cm | 47.24" H 200 cm | 78.74"

Felt: 2 kg/m² | 28.44 lbs/in²



+ selfadhesive tape (W 4 cm | 1.57"): 28 g/lm | 0.91 oz/ly

+ magnetic tape (W 10 cm | 3.94"): 340 g/lm | 10.96 oz/ly



Mounting on vertical surfaces only

Acoustics



Absorption



Mid tones



High tones

Certifications



Content

Configurations	3
Fabrics	4
Dimensions	8
Acoustics	9

Configuration

BuzziBack



2 layers of BuzziFelt stitched together
Extra layer available in Fabric, Trevira CS, Reflect,
Revive 1, Velvet, Clara 2, Remix 3, Hero 2, Tonus 4, Arda,
Memory 2
Stitch: on Felt / Fabric: Always OffWhite (except for BuzziBack
OffWhite, Natural, Ivory > Stitch Anthracite)



Min. W 40 cm | 15.75" H 80 cm | 31.50"
Max. W 120 cm | 47.24" H 200 cm | 78.74"



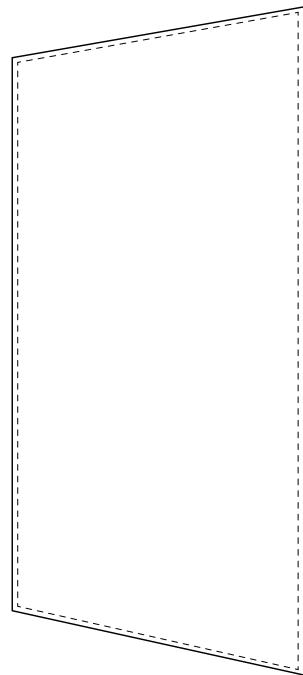
Felt: 2 kg/m² | 28.44 lbs/in²
+ selfadhesive tape (W 4 cm | 1.57"): 28 g/lm | 0.91 oz/ly
+ magnetic tape (W 10 cm | 3.94"): 340 g/lm | 10.96 oz/ly



Mounted with adhesive tape (W 4 cm | 1.57") or
magnetic tape on the back (W 10 cm | 3.94")

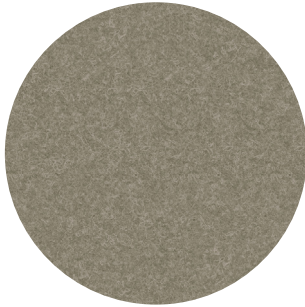


Mounting on vertical surfaces only



Fabrics

Felt (12 colors)



Composition 100% Recycled P.E.T. Felt, latex backing

Weight 1.000 g/m² | 29.49 oz/yd²

Abrasion resistance >7.000 Martindale

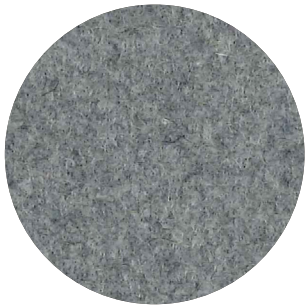
Flammability EU: EN 13501.1 + A1/2009 Class B-s1,d0

USA: ASTM E84 Class A certified

Fastness to light USA 5



Fabric (45 colors)



Category A

Composition 70% Recycled Wool, 25% Recycled Polyacryl,
5% Recycled Other Fabrics

Weight 405 g/m² | 11.94 oz/yd²

Abrasion resistance 40.000 Martindale, 50,000 Wyzenbeek

Flammability EU: EN 1021.1/2006 | BS EN 1021.1/2006 (cigarette).

EN 1021.2/2006 | BS EN 1021.2/2006 (match)

USA: CAL TB 117 | ASTM E84 CLASS A

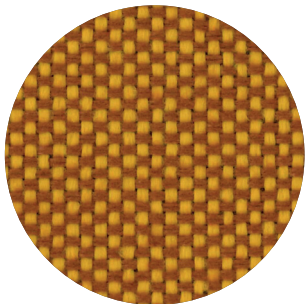
Fastness to light EU: 4 | USA 4

Fastness to rubbing EU: Wet 3-4 | Dry 4-5

Fastness to crocking USA: Wet 5 | Dry 5



Trevira CS (47 colors)



Category A

Weight 420 g/m² | 12.39 oz/yd²

Composition 100% Polyester, Trevira CS

Abrasion resistance 100.000 Martindale, 90,000 Wyzenbeek

Flammability BS 5852 part II: CRIB 5 | BS 7176 Medium Hazard

USA: CAL TB 117 | M1 | B1 | EN 1021/1-2 | C1 |

IMO Res. A652 (16)

Fastness to light EU: 6 | USA 5

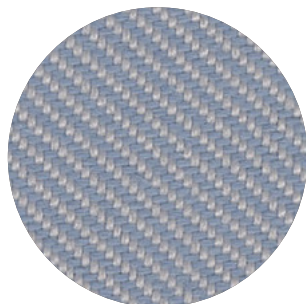
Fastness to rubbing EU: Wet 4-5 | Dry 4-5

Fastness to crocking USA: Wet 5 | Dry 5



Reflect (34 colors)

kvadrat



Category A

Weight 430 g/m² | 13.78 oz/yd²

Composition 100% Post-consumer recycled polyester

Abrasion resistance 100.000 Martindale

Flammability AS/NZS 3837 class 1 | ASTM E84 Class A Unadhered

ASTM E84 Class B Adhered | BS 5852 crib 5 with treatment

BS 5852 part 1 with treatment | EN 1021-1/2 | US Cal. Bull. 117-2013

Fastness to light Note 5-7, ISO 105-B02

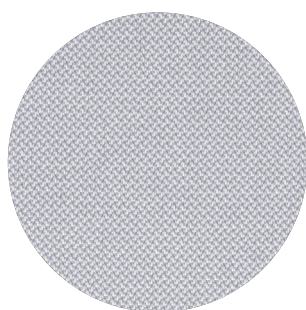
Fastness to rubbing EU: Wet 5-5 | Dry 5-5

Pilling Note 4, EN ISO 12945



Revive 1 (25 colors)

kvadrat



Category A

Composition 100% recycled polyester FR

Weight 430 g/lin.m

Abrasion resistance 60.000 Martindale rubs, EN ISO 12947

Flammability EN 1021-1/2 | DIN 4102 B1 | Önorm B1/Q1

UNI 9175 11M | US Cal. Tech. Bull. 117

IMO A.652 (16)

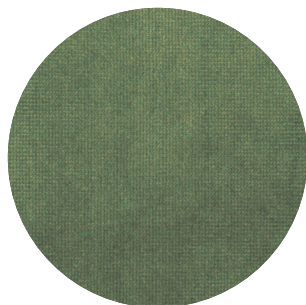
Fastness to light Note 5-7, ISO 105-B02

Fastness to rubbing (ISO) dry 5, wet 4-5

Pilling Note 4-5, EN ISO 12945



Velvet (12 colors)



Category B

Composition 100% PES

Weight 375 g/m² | 11.06 oz/yd²

Abrasion resistance > 100.000 Martindale

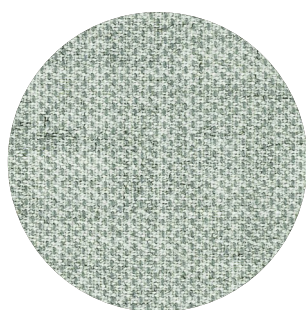
Fastness to light EU: 4-5

Fastness to rubbing EU: Wet 4 | Dry 4-5

Pilling EU: 4-5

Clara 2 (24 colors)

kvadrat



Category B

Composition 92% new wool, 8% nylon

Weight 400 g/lin.m

Abrasion resistance 80.000 Martindale rubs, EN ISO 12947

Flammability EN 1021-1/2 | BS 5852, ignition source 2-3 | DIN 4102 B2

NF D 60 013 | UNI 9175 11M | US Cal. Tech. Bull. 117, Sec. E

NFPA 260 | IMO A.652(16)

Fastness to light Note 5-7, ISO 105-B02

Fastness to rubbing (ISO) dry 4-5, wet 4

Pilling Note 4, EN ISO 12945



Remix 3 (73 colors)

kvadrat



Category B

Composition 90% new wool, 10% nylon

Weight 415 g/lin.m

Abrasion resistance 100.000 Martindale rubs, EN ISO 12947

Flammability EN 1021-1/2 | BS 5852 part 1

Önorm B1/Q1 | NF D 60 013 | UNI 9175, 1IM

AS/NZS 1530.3 | Cal. Tech. Bull. 117-2013

NFPA 260 | IMO FTP Code 2010:Part 8

Fastness to light Note 5-7, ISO 105-B02

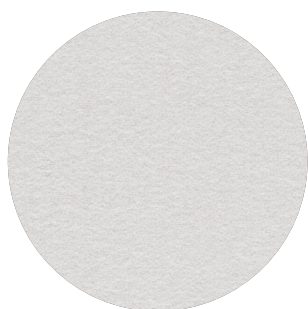
Fastness to rubbing (ISO) dry 4-5, wet 4

Pilling Note 4, EN ISO 12945



Hero 2 (33 colors)

kvadrat



Category C

Composition 96% new wool, 4% nylon

Weight 580 g/lin.m

Abrasion resistance 45.000 Martindale rubs, EN ISO 12947

Flammability EN 1021-1/2 | DIN 4102 B2 | NF D 60 013

UNI 9175 1IM | US Cal. Bull. 117-2013 | NFPA 260

IMO A.652 (16)

Fastness to light Note 5-6, ISO 105-B02

Fastness to rubbing (ISO) dry 4-5, wet 4-5

Pilling Note 3-4, EN ISO 12945



Tonus 4 (47 colors)

kvadrat



Category D

Composition 90% new wool, 10% Helanca

Weight 665 g/lin.m

Abrasion resistance 100.000 Martindale rubs, EN ISO 12947

Flammability EN 1021-1/2 | BS 5852 part 1 | DIN 4102 B2

Önorm B1/Q1 | NF D 60 013 | UNI 9175 1IM

US Cal. Bull. 117-2013 | NFPA 260 | IMO A.652 (16)

Fastness to light Note 5-7, ISO 105-B02

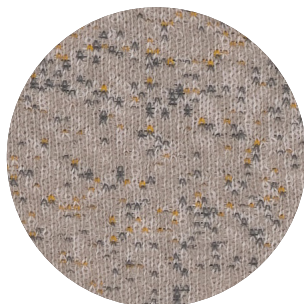
Fastness to rubbing (ISO) dry 3-5, wet 3-5

Pilling Note 3, EN ISO 12945



Arda (12 colors)

kvadrat



Category E

Composition 70% new wool 21% polyester 9% nylon

Weight 800 g/lin. m | 25.8 oz/ly

Abrasion resistance

Approx. 50.000 Martindale rubs, EN ISO 12947

Flammability ASTM E84 Class A Unadhered | AS/NZS 3837 class 2 | BS 5852 part 1
BS 5852 crib 5 | DIN 4102 B2 | EN 1021-1/2 | IMO FTP Code 2010 Part 8
UNI 9175 1IM | US Cal. Bull. 117-2013

Fastness to light Note 5-8, ISO 105-B02

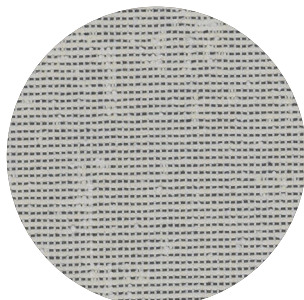
Fastness to rubbing Dry note 3-5 ISO 105-X12
Wet note 3-5 ISO 105-X12

Pilling Note 4, EN ISO 12945



Memory 2 (20 colors)

kvadrat



Category E

Composition 100% Trevira CS

Weight 700 g/lin.m

Abrasion resistance

35.000 rubs acc. to the Martindale method, EN ISO 12947

Flammability EN 1021-1/2 | DIN 4102 B1 | Önorm B1/Q1
NF D 60 013 | NF P 92 507 M1 | UNI 9175 1IM
UNI 9177 classe 1 | US Cal. Tech. Bull. 117
IMO A.652 (16)

Fastness to light Note 5-8, ISO 105-B02

Fastness to rubbing (ISO) dry 4-5, wet 4-5

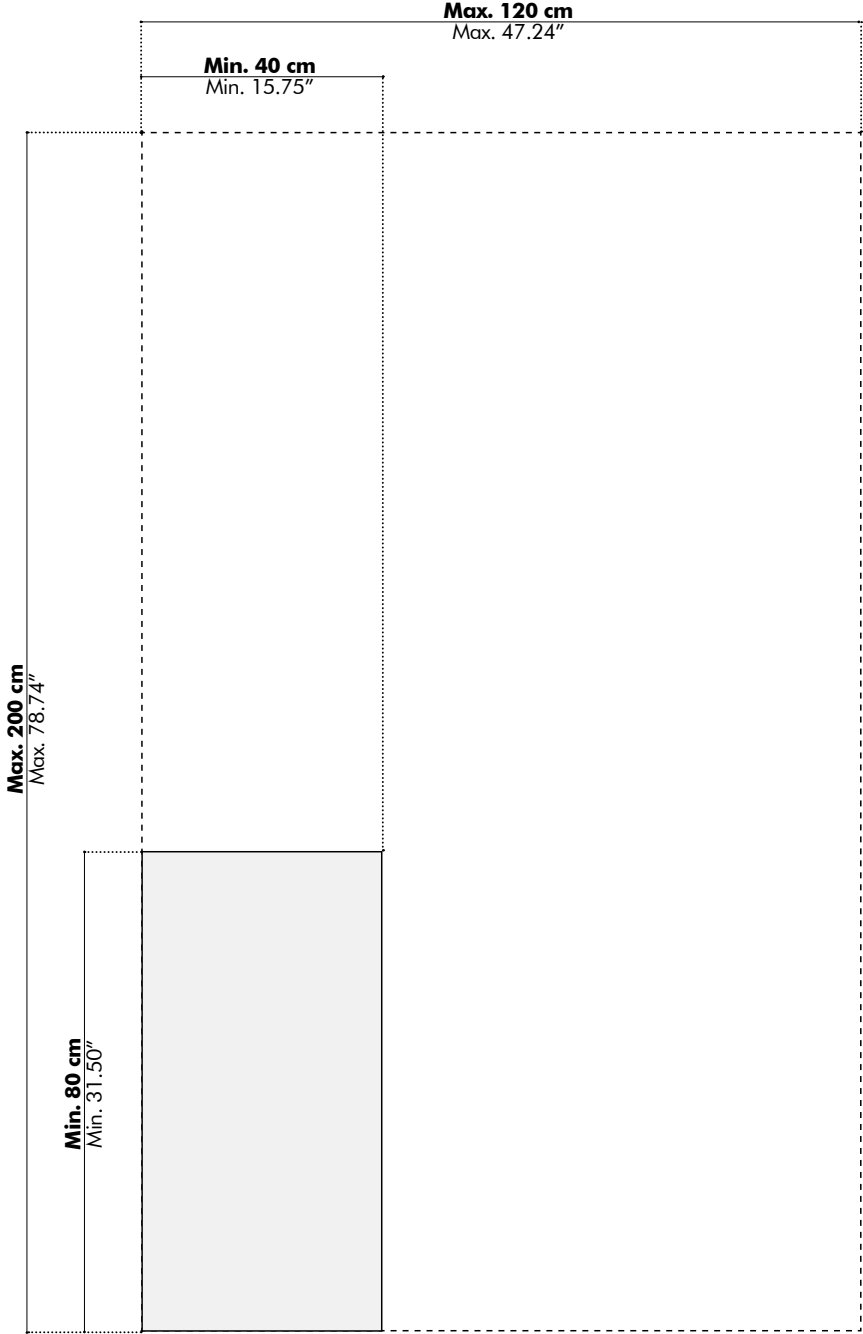
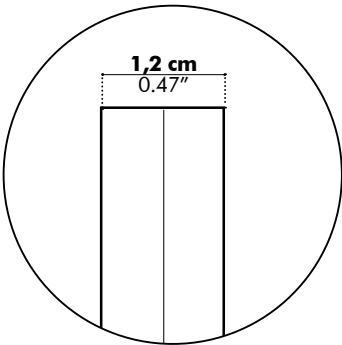
Pilling Note 4, EN ISO 12945



Dimensions

BuzziBack

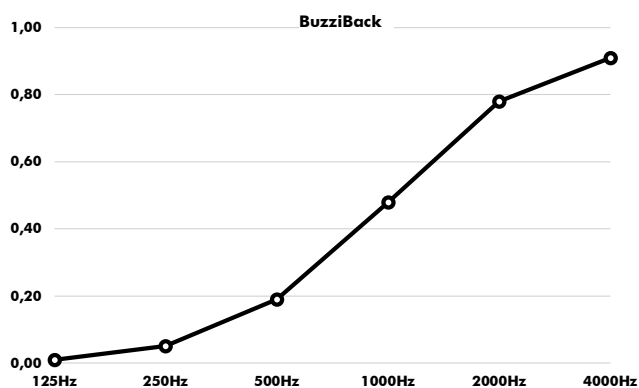
Side View



Acoustics

BuzziBack

Absorption coefficient



Hz	α^s
125	0.01
250	0.05
500	0.19
1000	0.48
2000	0.78
4000	0.91

Absorption Values

α
(ISO 11654) **0.25**

NRC
(ASTM - C423) **0.40**

SAA
(ASTM-C423) **0.38**

Class
(ISO 11654) **E**