

## Upholstery Collections

---

outdoor

**PEDRALI®**

# Legend

## Legenda



**Outdoor use**  
Adatto per uso esterno

### washing / lavaggio



**Wash at max 30°C normal**  
Lavaggio normale, max 30°C



**Wash at max 30°C mild**  
Lavaggio delicato, max 30°C



**Wash at max 40°C normal**  
Lavaggio normale, max 40°C

### dry cleaning / lavaggio a secco



**Do not dry clean**  
Lavaggio a secco non consentito



**Dry clean, perchlorethylene (PCE)**  
Lavaggio a secco con percloroetilene (PCE)



**Gentle dry cleaning with PCE**  
Lavaggio a secco delicato con PCE

### drying / asciugatura



**Tumble dry at low temperature**  
Asciugatrice a bassa temperatura



**Do not tumble dry**  
Non asciugare in asciugatrice

### ironing / stiratura



**Do not iron**  
Non stirare



**Iron at low temperature**  
Stirare a bassa temperatura

### bleaching / candeggio



**Do not bleach**  
Non candeggiare



**Any bleaching agent allowed**  
Candeggio consentito



**Product certified for low chemical emissions:**  
Prodotto certificato per basse emissioni di sostanze chimiche:  
UL.COM/GG  
UL 2818



**96/98/CE – 2010/68/UE**  
**EU marine equipment rules compliant**  
Conforme ai requisiti europei per equipaggiamenti marittimi



**Certified free of substances harmful to human health and the environment**  
Certificato per l'assenza di sostanze nocive per la salute umana e per l'ambiente.



Fabrics  
Tessuti

category D | N | H

PEDRALI®

FABRICS / TESSUTI

only for outdoor collections cushions / solo per cuscini delle collezioni outdoor

	D		H		N
	D80÷D91	D130÷D133	D100÷D105	H150, H151	N40÷N45
COMPOSITION COMPOSIZIONE	100% Acrylic	100% Polypropylene	100% Polypropylene	84% Polypropylene 16% Polyester	100% Acrylic
WEIGHT GRAMMATURA	290 g/m² (8.55 oz/yd²)	470 g/m² (13.86 oz/yd²)	430 g/m² (12.68 oz/yd²)	385 g/m² (11.35 oz/yd²)	390 g/m² (11.59 oz/yd²)
ABRASION ABRASIONE	> 20.000 cycles, Martindale (EN ISO 5470-2)	40.000 cycles, Martindale (EN ISO 12947-2)	50.000 cycles, Martindale (EN ISO 12947-2)	30.000 cycles, Martindale (EN ISO 12947-2)	24.000 cycles, Martindale (EN ISO 12947-2)
RUBBING FASTNESS SOLIDITÀ ALLO SFREGAMENTO	/	Dry 4-5 and Wet 4, scale 1-5 (ISO 105-X12)	Dry and Wet 4-5, scale 1-5 (ISO 105-X12)	Dry 4-5 and Wet 4, scale 1-5 (ISO 105-X12)	Dry and Wet 4-5, scale 1-5 (ISO 105-X12)
PILLING	/	4-5, scale 1-5 (EN ISO 12945-2 to 5.000 rubs)	4-5, scale 1-5 (EN ISO 12945-2)	4-5, scale 1-5 (EN ISO 12945-2 to 5.000 rubs)	3-4, scale 1-5 (EN ISO 12945 to 5.000 rubs)
LIGHT FASTNESS SOLIDITÀ ALLA LUCE	8, scale 1-8 (ISO 105-B04)	7-8, scale 1-8 (ISO 105-B02)	7, scale 1-8 (ISO 105-B02)	7-8, scale 1-8 (ISO 105-B02)	6-7, scale 1-8 (ISO 105-B02)
WATER FASTNESS SOLIDITÀ ALL'ACQUA	8, scale 1-8 (ISO 105-B04)	7, scale 1-8 (ISO 105-B04)	>7, scale 1-8 (ISO 105-B04)	4-5, scale 1-5 (ISO 105-E02) 4, scale 1-5 (ISO 105-E03)	7-8, scale 1-8 (ISO 105-B04)
FLAME RESISTANCE RESISTENZA AL FUOCO	/	BS 5852 Part 1 US CA TB 117-2013 - Compliant to the criteria certifying the absence of flame retardant chemicals (AB 2998)	US CA TB 117-2013 - Compliant to the criteria certifying the absence of flame retardant chemicals (AB 2998)	BS 5852 Part 0 EN 1021 — 1	US CA TB 117-2013 - Compliant to the criteria certifying the absence of flame retardant chemicals (AB 2998)
APPROVED OMOLOGATO					
CLEANING LAVAGGIO					



only for outdoor collections cushions / solo per cuscini delle collezioni outdoor



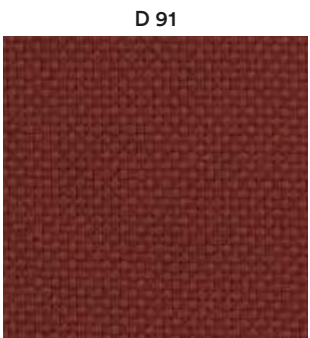
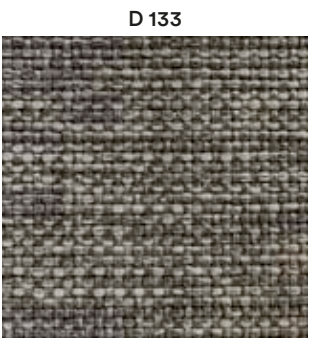
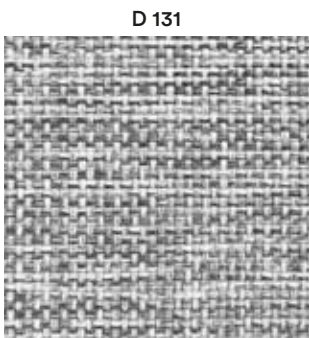
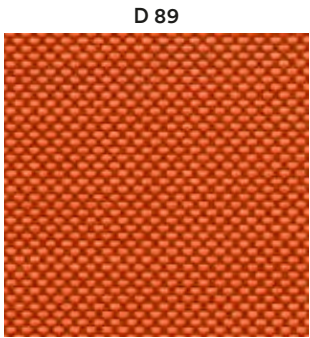
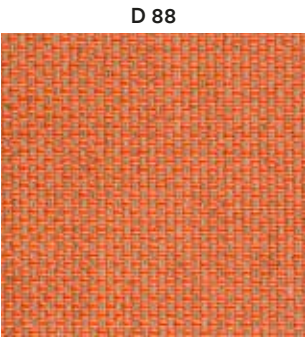
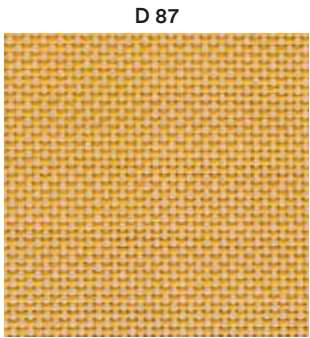
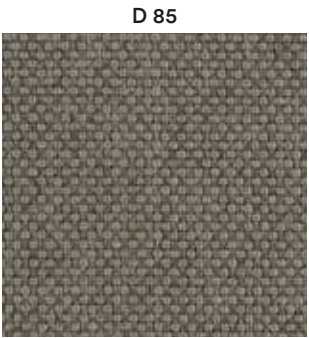
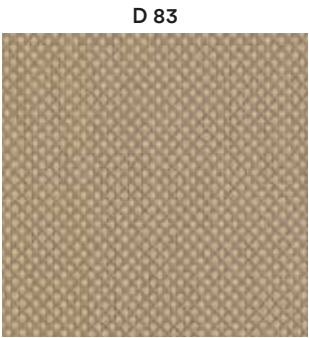
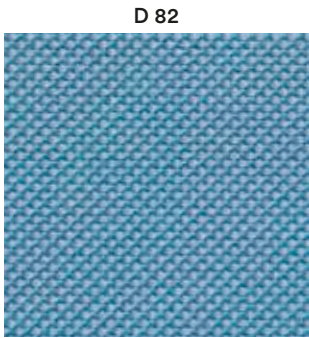
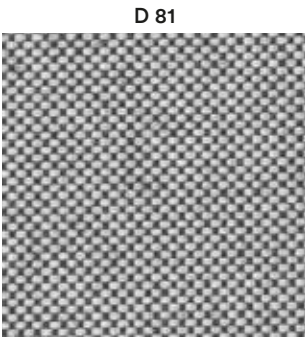
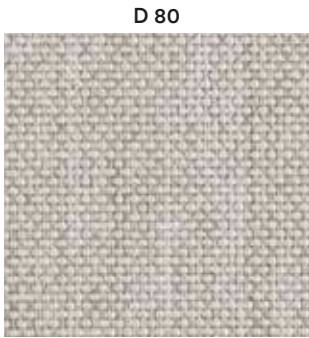
D

Collection / Collezione

• PEDRALI®

FLORIDA

from D80 to D91

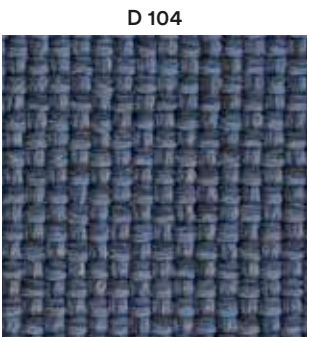
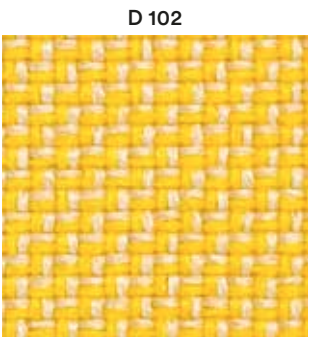
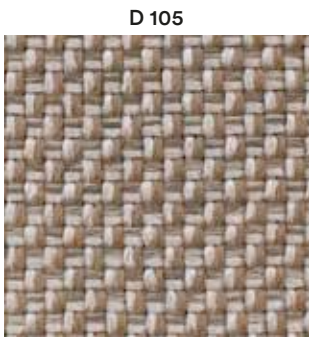


Collection / Collezione

• PEDRALI®

ZEFIRO

from D100 to D105



H

Collection / Collezione

• PEDRALI®

from H150 to H151



only for the cushions of the items / solo per cuscini degli articoli



Nolita  
3650.3  
3657.3  
3659.3  
3654.7



Babila Twist  
2795



Guinea  
3695  
3675.8  
3694  
3694.5



Lamoris  
3684



Plus  
630.3



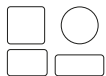
Plus Air  
631.3  
636.3



Rail  
RAIL.23



Reva  
REVA\_L.3



accessory cushions  
3001  
3002  
3004  
3005

only for outdoor accessory cushions / solo per cuscini accessori outdoor



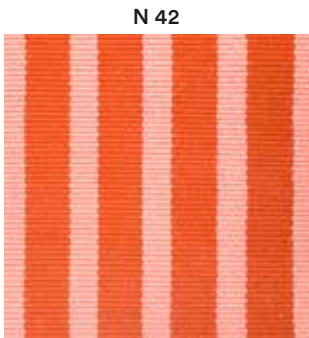
N

Collection / Collezione

• DEDAR

STRANGE LOVES

from N40 to N45







Fabrics  
Tessuti

category D | G

PEDRALI®

FABRICS / TESSUTI

only for outdoor collections cushions / solo per cuscini delle collezioni outdoor

	D				G	
	D140÷D145	D22÷D28	D150÷D155	D110÷D115	G270÷G272	G260÷G263
COMPOSITION COMPOSIZIONE	100% Polypropylene	100% Polypropylene	100% Polypropylene	88% Polypropylene 12% Polyester	100% Polypropylene	100% Polyester
WEIGHT GRAMMATURA	520 g/m² (15.34 oz/yd²)	614 g/m² (18.11 oz/yd²)	458 g/m² (13.51 oz/yd²)	470 g/m² (13.86 oz/yd²)	392 g/m² (11.56 oz/yd²)	592 g/m² (17.46 oz/yd²)
ABRASION ABRASIONE	62.000 cycles, Martindale (EN ISO 13936-2)	> 30.000 cycles, Martindale (EN ISO 12947-2)	35.000 cycles, Martindale (EN ISO 12947-2)	30.000 cycles, Martindale (EN ISO 12947-2)	28.000 cycles, Martindale (EN ISO 12947-2)	26.000 cycles, Martindale (EN ISO 12947-2)
RUBBING FASTNESS SOLIDITÀ ALLO SFREGAMENTO	Dry and Wet 4-5, scale 1-5 (ISO 105-X12)	Dry and Wet 4-5, scale 1-5 (ISO 105-X12)	Dry and Wet 5, scale 1-5 (ISO 105-X12)	Dry 4-5 and Wet 4, scale 1-5 (ISO 105-X12)	Dry and Wet 4-5, scale 1-5 (ISO 105-X12)	Dry 4-5 and Wet 5, scale 1-5 (ISO 105-X12)
PILLING	4-5, scale 1-5 (EN ISO 12945-2 to 5.000 rubs)	5, scale 1-5 (EN ISO 12945-2 to 5.000 rubs)	5, scale 1-5 (EN ISO 12945-2)	4, scale 1-5 (EN ISO 12945-2 to 5.000 rubs)	5, scale 1-5 (EN ISO 12945-2)	4-5, scale 1-5 (EN ISO 12945-2)
LIGHT FASTNESS SOLIDITÀ ALLA LUCE	7, scale 1-8 (ISO 105-B02)	7, scale 1-8 (ISO 105-B02)	7, scale 1-8 (ISO 105-B02)	7-8, scale 1-8 (ISO 105-B02)	7, scale 1-8 (ISO 105-B02)	7-8, scale 1-8 (ISO 105-B02)
WATER FASTNESS SOLIDITÀ ALL'ACQUA	7, scale 1-8 (ISO 105-B04)	5, scale 1-5 (ISO 105-E01)	8, scale 1-8 (ISO 105-B04)	7, scale 1-8 (ISO 105-B04)	4-5, scale 1-5 (ISO 105-E03) 5, scale 1-5 (ISO 105-E02)	4-5, scale 1-5 (ISO 105-E03) (ISO 105-E02)
FLAME RESISTANCE RESISTENZA AL FUOCO	BS 5852 Part 1	BS 5852 Part 1	BS 5852 Part 0	BS 5852 Part 0	BS 5852 Part 0	BS 5852 Part 1-2 BS 5852 Crib 5 DIN 4102 B1 NFP92-503-504-505 M
	US CA TB 117-2013 - Compliant to the criteria certifying the absence of flame retardant chemicals (AB 2998)					
APPROVED OMOLOGATO	/			  PRODUCT CERTIFIED FOR LOWCHEMICAL EMISSIONS UL COMFGG UL 2818 170166-420	/	  PRODUCT CERTIFIED FOR LOWCHEMICAL EMISSIONS UL COMFGG UL 2818 170166-420
CLEANING LAVAGGIO						





D

D 140



D 141



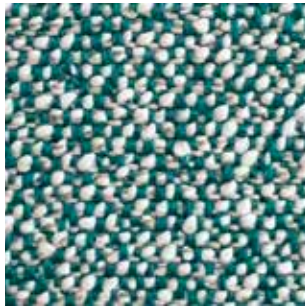
D 142



D 143



D 144



D 145



D 151



D 150



D 152



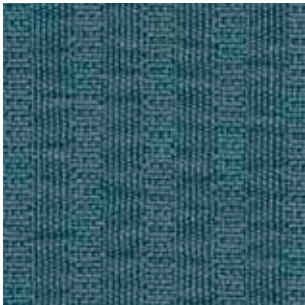
D 153



D 155



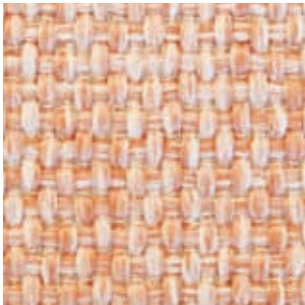
D 154



D 22



D 23



D 24



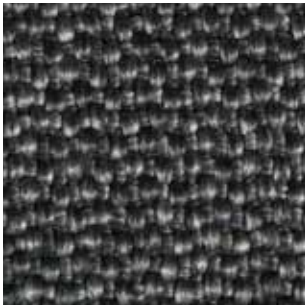
D 27



D 28



D 25



D 26



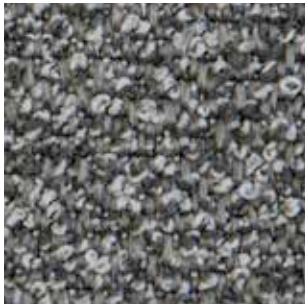
D 110



D 111



D 112



D 113



D 114



D 115



Collection / Collezione

• PEDRALI®

BREZZA

from D22 to D28

Collection / Collezione

• PEDRALI®

SAND

from D110 to D115



G

Collection / Collezione

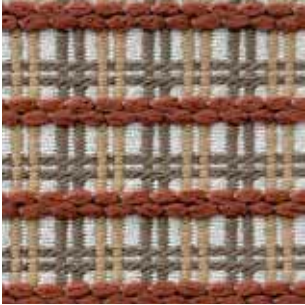
• RUBELLI

CAIPIRINHA from G270 to G272

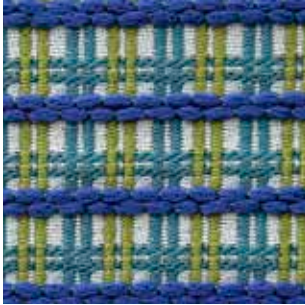
G 270



G 271



G 272



UNDERWOOD from G260 to G263

G 263



DESIGNER FormaFantasma

G 260



G 261



G 262

