



ON.



ON.

In our ON chair, patented Trimension® technology succeeds in synchronizing three-dimensional flexibility perfectly with our bodies for the first time. And in an outstandingly high-quality design plus extensive product family that checks virtually all the boxes. Three backrest heights, each adjustable by 60 mm, three types of upholstery and three sorts of 3D armrests add up to 36 basic variants for the task chairs alone. Then there's the ON Casual range, which features exclusive knitted covers and conference and visitor chairs that coordinate in terms of function and design.

Consequently, the product family marries healthy 3D sitting with a prestigious appeal.

Design: wiege

Task chair 175/71 and visitor chair 178/71 at a Versa 638/51 stand-alone table.

The extensive ON product range offers task and visitor chairs to match. Seamless, professional end-to-end interior design solutions are the upshot.

Appealing and ideal options for offices, conference rooms and meeting spaces.



Task chair 175/71.

The timeless, stylish design combined with first-class materials, precise craftsmanship and a sophisticated synchro-adjustment mechanism add up to superb quality. And make ON a chair built to last.



Task chair with contoured upholstery 175/73 and Occo Conference upholstered chair 224/53 at a Versa 638/51 stand-alone table.
In terms of functionality and design, multiple variants satisfy any requirements. What's more, the chairs are easy to combine with other Wilkhahn products.
Attractive solutions that adapt to all sorts of requirements are the result.



Task chair 174/7 and Stand-up 202/0108 at a Timetable Lift 615/00.

The synchro-adjustment mechanism with swivel arms that move separately from one another (Trimension), the three-dimensional Flexframe and the backrest upholstery promise excellent comfort.



Task chair 174/7 with IN task chair 184/7 and a Rider sit-to-stand stool 205/1.

Interaction between people and the chair is completely intuitive. Therefore, incorporating movement becomes one of the chair's most frequently used and versatile options.



The ON Casual range combines the best of both worlds. It fuses the outstanding comfort of a relaxed sitting position with the 3D flexibility Trimension® provides. It's all down to the concave form of the seat cushioning and the three-dimensional backrest frame with its high-tech cover.



97 Mosaic



36 Lines



59 Cubes

With a wide range of configuration options and flexible capabilities such as enabling a forward seat tilt, or adjusting the seat depth, armrest and headrest position, or backrest tension, ON adapts to users superbly.



Plastic star base on casters



Swivel arms that move independently of one another



Armrest pad on polyurethane foam



High backrest with optional headrest



Star base with aluminum polish on glides



Free-to-move synchro-adjustment mechanism



Upholstered, leather-covered armrests



Seat-depth extension

A wide range of upholstery options and a large selection of colors and fabrics allow personalization of the chair.



Seat and backrest with Fiberflex



Seat and backrest covered in fabric



Management grade upholstery



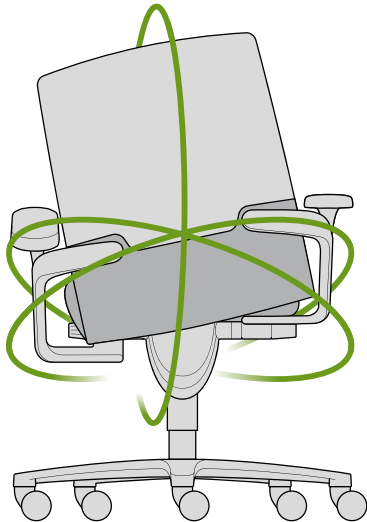
Precise and high-quality seams



Contoured upholstery, contrasting double and contour-defining stitching



ON. Free-to-move, powered by Trimension®.

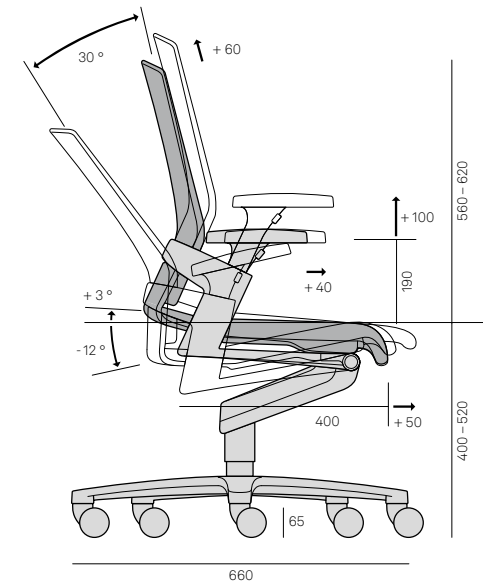


MORE ACTIVE, MORE DYNAMIC, HEALTHIER.

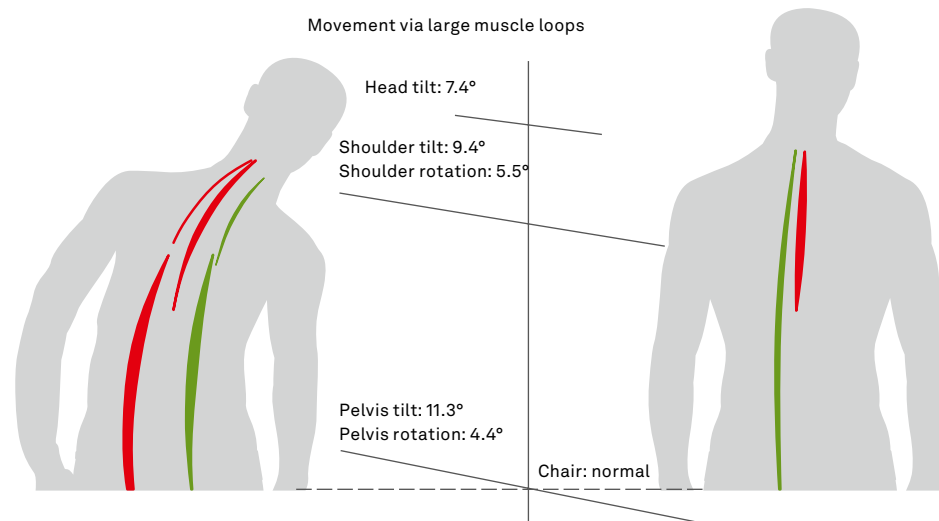
All health experts agree that our whole body needs movement to function properly. But sitting still for long periods of time will harm our bodies in the long term. Primarily, it's the three-dimensional movement of the hips that has the biggest effect on a healthy metabolism. For this reason, Wilkhahn joined forces with the German Sport University Cologne to develop free-to-move kinematics, which prompts people to move their bodies in all directions while sitting down.

Several scientific case studies corroborated the healthy, performance-enhancing effects of the free-to-move ON, IN and AT office chairs.

These chairs encourage users to move intuitively, more frequently and in different ways. Therefore, the chair boost their feeling of wellbeing, powers of concentration and the metabolism of the muscles in the lumbar region (which is very often plagued by backache).



ON. Free-to-move, powered by Trimension®. Case studies by the Centre for Health Care Ethics in Germany.



A new approach to ergonomics in the office

Lab study:

The lab study examined how the concept correlated with our bodies, the biomechanical impact and the subjective feeling of comfort that Trimension® provides in the ON® office chair.

Results:

- Pressure is distributed evenly while people are sitting down and perceived to be very comfortable.
- Some 90% of the test persons would like this sort of sitting concept in their work-space.

- By motivating people to bend, stretch, lean sideways and rotate their pelvis, Trimension® stimulates the body to engage in a range of natural movements where the head, shoulder and pelvis form a functioning unit when moving with the chair.
- In addition to the large muscle loops, the physiological rotation of the torso activates the muscles deep in the back which are key to stabilizing the spine.

Three-dimensional dynamic seating for better performance in offices

Comparative field study:

The researchers then investigated whether, alongside wellbeing, this sitting concept while using ON® also boosted people's performance. The study was carried out with 80 test persons in an insurance company's office complex over a period of 12 weeks.

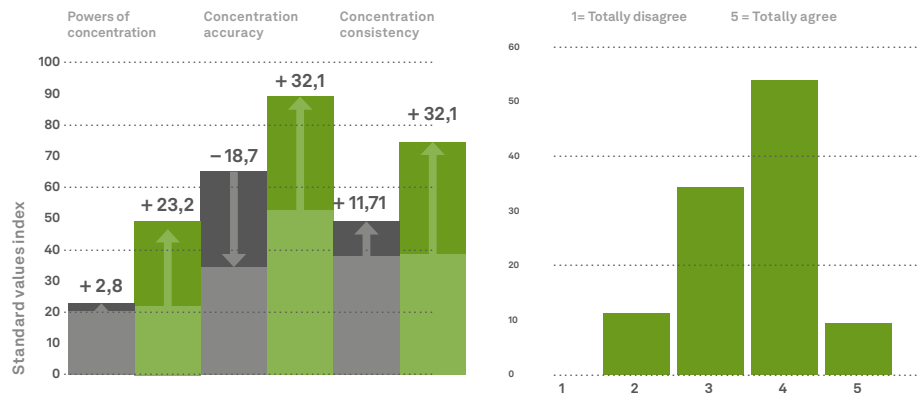
Recognized, standard tests and questionnaires were used to identify powers of concentration.

Results:

- Compared with the control group, the metrics used to gauge the free-to-move

group's powers of concentration had improved in every respect at the end of the three months. They were faster, made fewer mistakes and worked more consistently.

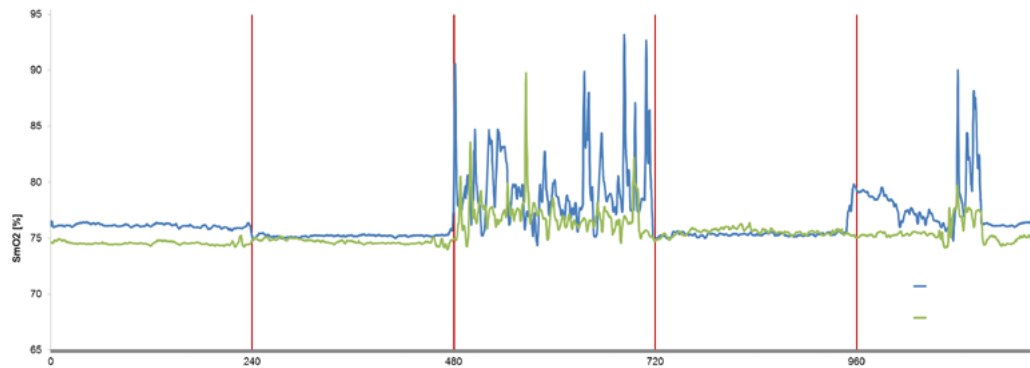
- After a short space of time, the free-to-move group got used to and were confident about applying the new movement options.
- The free-to-move group's wellbeing didn't just improve in relative but also in absolute terms.



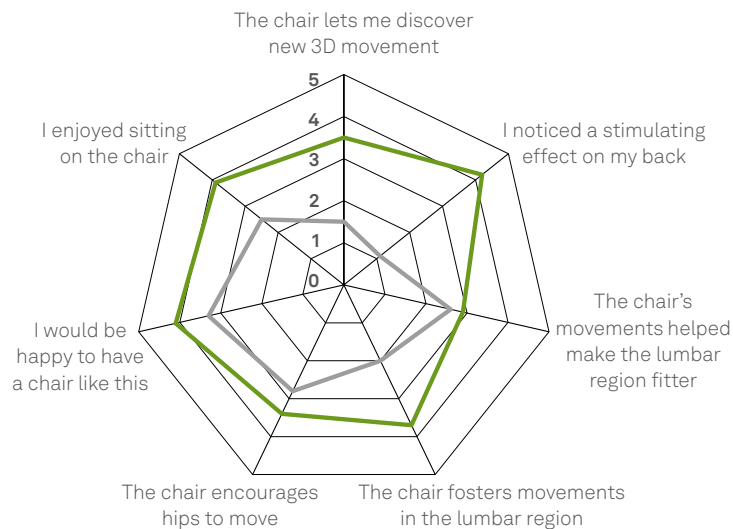
The control group (gray) with conventional office chairs and trial group (green) with 3D dynamic ON chairs over a period of three months.

My physical fitness has improved thanks to ON over the past 11 months.

ON. Free-to-move, powered by Trimension®. Case studies by the Centre for Health Care Ethics in Germany.



The metabolism of muscles in the lumbar region is much more active when people sit on the 3D dynamic office chair.



Comparison of results from the questionnaire about sitting on the 3D and 2D dynamic office chair

More movement in sedentary workspaces

A study on the impact of Trimension® 3D kinematics on dorsal muscles, the range of motion and physiological stimulation

Based on standardized office processes (static and dynamic), new measurement methods were applied to examine metabolic activity in the particularly important muscles in the lumbar region.

The results measured while people were sitting on the IN free-to-move office chair were compared with those of people sitting on the very good Neos 2D dynamic office chair.

Results:

- The test persons used the whole three-dimensional range of motion that Trimension® offers.
- When people lean sideways, there are significant differences between a 2D synchro-adjustment mechanism and Trimension®.
- Importantly, people sitting on an IN free-to-move office chair alternate between tensing and relaxing their muscles to a greater extent than on the chair used as a comparison.
- The test persons rated the free-to-move office chair better on all criteria.

ON. Models.



174/7
Task chair, medium-high backrest



175/7
Task chair, high backrest



175/73
Task chair, contoured upholstery, high backrest



174/74
ON Casual task chair, medium-high backrest



175/74
ON Casual task chair, high backrest



175/8
24-hour chair, high backrest



171/7
Meeting/visitor chair, medium-high backrest



174/71
Task chair, management grade upholstery, medium-high backrest



175/71
Task chair, management grade upholstery, high backrest with headrest



171/71
Meeting/visitor chair, management grade upholstery, medium-high backrest

ON. Models.



176/7
Meeting/visitor chair, 4-leg, standard height backrest, up to 5 stackable free-standing



178/7
Meeting/visitor chair, cantilever chair, standard height backrest, up to 5 stackable free-standing



178/71
Meeting/visitor chair, cantilever chair, standard height backrest, management grade upholstery



178
Four-wheeled trolley for 8 cantilever chairs

ON. Frame designs.



174/7, 175/7

175/73

174/74, 175/74

174/71, 175/71



175/8

171/7

171/71



176/7

178/7

178/71

Frame surfaces



Black plastic



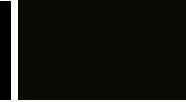
High-luster polish



Polished



Black

Black with a textured
matte finish

Matte silver satin

White with a textured
matte finish

Frame surfaces



High-luster polish



Polished



Black

Black with a textured
matte finish

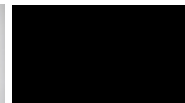
Matte silver satin

White with a textured
matte finish

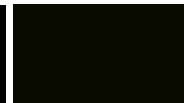
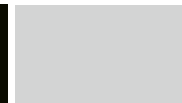
Frame surfaces



Bright chrome-plated



Black

Black with a textured
matte finish

Matte silver satin

White with a textured
matte finish

Swivel arms coated, polished or high-lustre polished. Mechanism shell coated or shot blasted.
The digital sample colors differ from the originals. You can find our current fabric collection in our [material library](#).

ON. Upholstery versions.



174/7, 175/7



171/7



176/7



178/7



175/8



175/73

Upholstery materials



35 Fiberflex



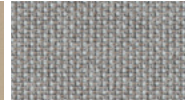
47 Nova



51 Oceanic



54 Step/Step Melange



56 Cyber



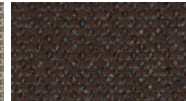
58 Evida



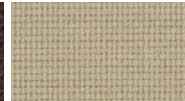
60 Blend



64 Morph



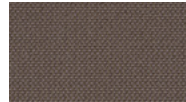
65 Re-Wool



66 Lano

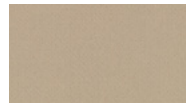


68 Remix

91 Steelcut Trio /
Quartet

92 Credo

Upholstery materials



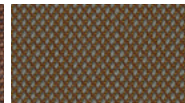
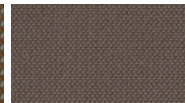
54 Step/Step Melange



66 Lano

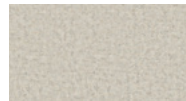


68 Remix

91 Steelcut Trio
Quartet

92 Credo

Upholstery materials



60 Blazer

Swivel arms coated, polished or high-lustre polished. Mechanism shell coated or shot blasted.
The digital sample colors differ from the originals. You can find our current fabric collection in our [material library](#).

ON. Upholstery versions.



174/71, 175/71



171/71

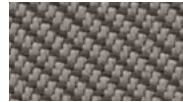


178/71

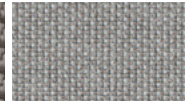


174/74, 175/74

Upholstery materials



51 Oceanic



56 Cyber



60 Blazer



64 Morph



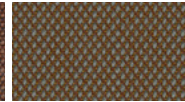
65 Re-Wool



66 Lano



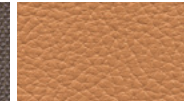
68 Remix



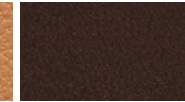
91 Steelcut Trio
Quartet



92 Credo



74 Leather

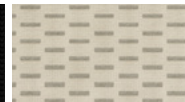


87 Leather

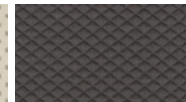
Upholstery materials



36 Lines



59 Cubes



97 Mosaic



74 Leather

ON. Reference projects.

Model: 174/7, object: M Moser Associates, New York, US, photo: Eric Laignel



ON. Reference projects.

Model 174/7 and AT 187/7, object: CBRE The Core, Amsterdam, the Netherlands, photo: Stijnstijl Fotografie



ON. Reference projects.

Model 175/71, Object: L'Osteria, Munich, Germany, Photo: Reiner Hoffmann



ON. Reference projects.

Modell 175/71, Object: BGV Badische Versicherungen, Karlsruhe, Germany, Photo: Daniel Wieser

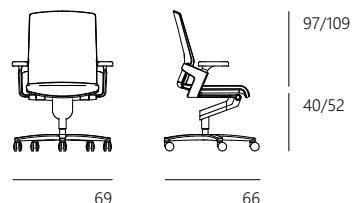
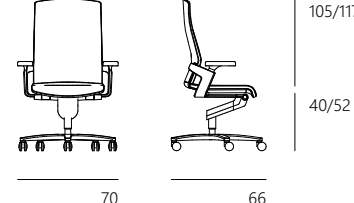
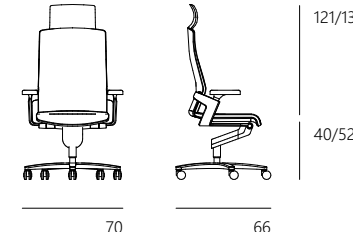
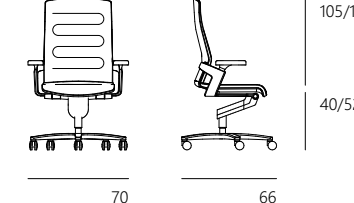
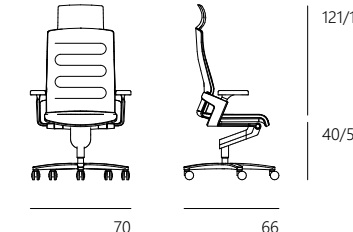
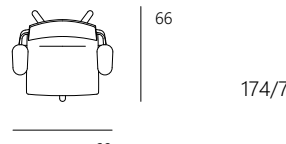
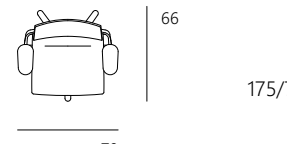
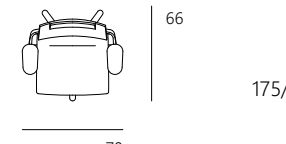
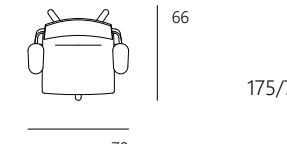
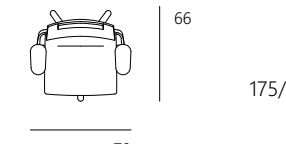
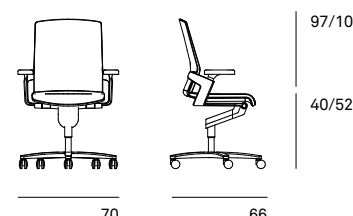
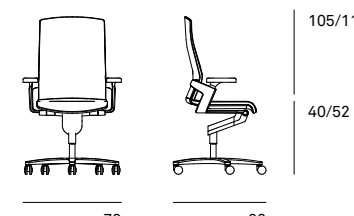
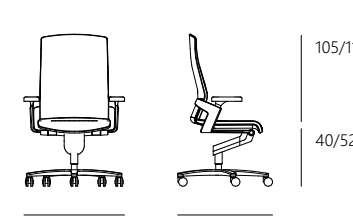
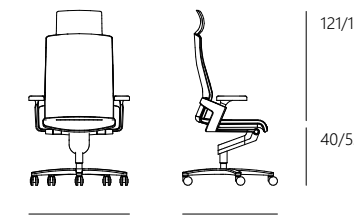
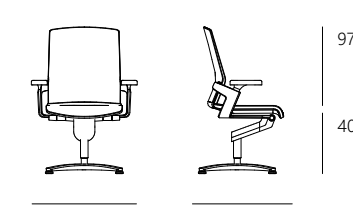
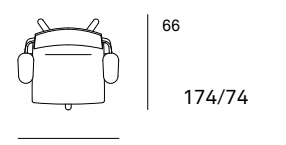
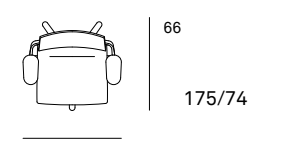
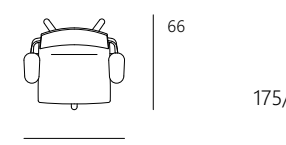
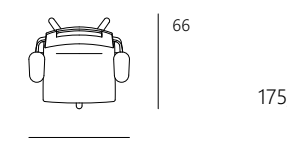
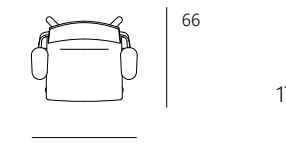


ON. Reference projects.

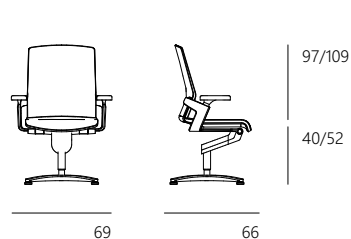
Model 174/7 and 178/7, Project: VR Bank Nord eG, Flensburg, Germany, Photo: WINI Büromöbel



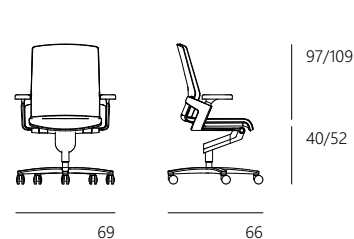
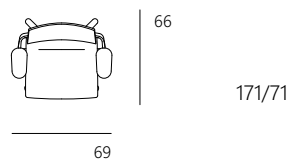
ON. Models and dimensions.

 <p>69 66 97/109 40/52</p>	 <p>70 66 105/117 40/52</p>	 <p>70 66 121/133 40/52</p>	 <p>70 66 105/117 40/52</p>	 <p>70 66 121/133 40/52</p>
 <p>69 66 174/7</p> <p>174/7 Task chair, medium-high backrest</p>	 <p>70 66 175/7</p> <p>175/7 Task chair, high backrest</p>	 <p>70 66 175/7</p> <p>175/7 High backrest with headrest</p>	 <p>70 66 175/73</p> <p>175/73 with contoured upholstery</p>	 <p>70 66 175/73</p> <p>175/73 with contoured upholstery with headrest</p>
 <p>70 66 97/109 40/52</p>	 <p>70 66 105/117 40/52</p>	 <p>70 66 105/117 40/52</p>	 <p>70 66 121/133 40/52</p>	 <p>69 66 97/109 40/52</p>
 <p>70 66 174/74</p> <p>174/74 ON Casual task chair, medium-high backrest</p>	 <p>70 66 175/74</p> <p>175/74 ON Casual task chair, high backrest</p>	 <p>70 66 175/8</p> <p>175/8 24-hour chair</p>	 <p>70 66 175/8</p> <p>175/8 with headrest</p>	 <p>69 66 171/7</p> <p>171/7 Meeting/visitor chair</p>

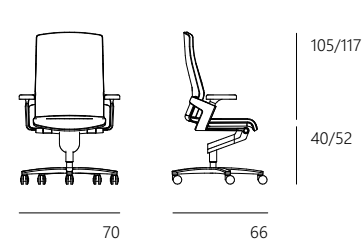
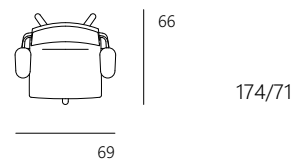
ON. Models and dimensions.



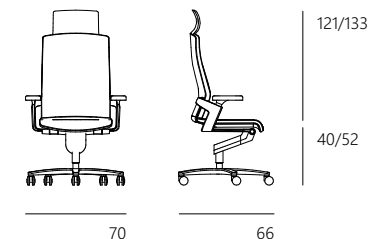
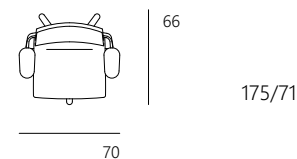
171/71
Meeting/visitor chair with management grade upholstery



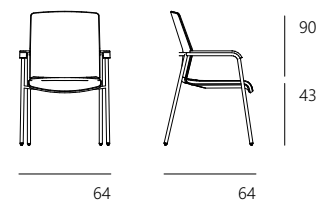
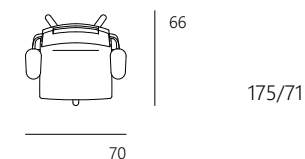
174/71
Task chair with management grade upholstery



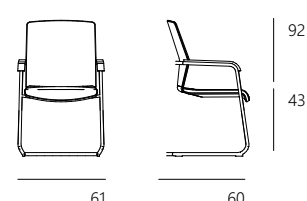
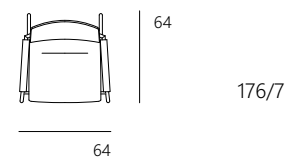
175/71
Task chair with management grade upholstery



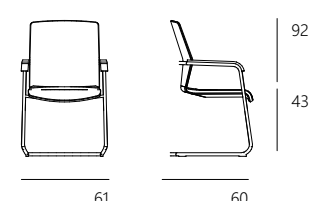
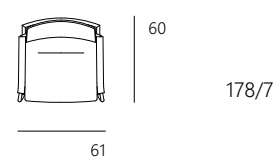
175/71
with headrest



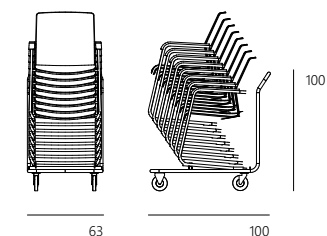
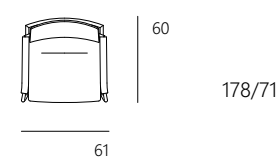
176/7
Meeting/visitor chair



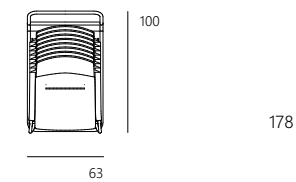
178/7
Cantilever chairs



178/71
Cantilever chair with management grade upholstery



178
Four-wheeled trolley



ON. Technical details.

Task chairs with Trimension®, synchro-nous, three-dimensional kinematics to encourage three-dimensional dynamic sitting. The perfect interaction of the synchro-adjustment mechanism, seat and backrest automatically adapts to any posture the user adopts. The supporting counter pressure is quickly and precisely adjustable in any direction (4.5 rotations max.) for people weighing from 45 to 120 kg. The backrest height is adjustable by up to 60 mm in six lockable positions. The backrest and seat can be locked in the front sitting position. The seating height is precision adjustable between 400 mm and 520 mm at the touch of a button with a DIN 4550-compliant gas lift. All models are optionally available with seat-depth extension of 400 to 450 mm.

Meeting/visitor chairs with Trimension, available on request with swivel-mounted column, not height adjustable, alternatively as a four-leg variant or cantilever chair, optionally stackable.

Frame

Task chairs

Five-star base, optionally made of black through-dyed plastic or die-cast aluminum. Twin-wheel swivel casters with load-dependent braking, made of black or white polyamide compliant with DIN EN12529 as the standard version for carpets; with gray soft polyurethane tread for hard flooring. The casters are optionally electrically conductive.

Swivel arms made of die-cast aluminum. Mechanism shell made of blasted die-cast aluminum, optionally coated black, or white with a textured matte finish or with a silver satin finish, with a top cover made of black or white through-dyed polypropylene. The gas lift is covered by a telescopic protective tube made of black or white through-dyed polypropylene.

24-hour chairs

All have a die-cast aluminum star base with extra swivel arm supports, with a modified synchro-adjustment mechanism and exceptionally hard-wearing covers from Wilkhahn's fabric and leather collection. Designed for people weighing up to 120 kg, the models consequently comply with the DIN EN1335 standard requirements for 24-hour use.

Visitor/conference chairs

Four-star base and swivel arm made of die-cast aluminum. Black, multipurpose glides made of plastic for all types of flooring. Mechanism shell made of die-cast, shot-blasted aluminum, optionally coated in black or with a silver satin finish, with top cover made of black, through-dyed polypropylene. The gas lift is covered by a telescopic protective tube made of black, through-dyed polypropylene.

Cantilever chairs

Frame made of tubular steel (bright chrome-plated tubular steel, black or white coating with a textured matte finish), 22 mm in diameter, optionally with anti-tilt stopper made of black or white polyamide as the standard version for carpets, with extra glides for hard flooring, with felt inserts on request.

Optionally for cantilever chair, model 178/7, four-wheeled trolley, model 178 for 8 cantilever chairs.

Visitor chair, four-leg

Frame made of tubular steel (bright chrome-plated, black or white coating with a textured matte finish), leg diameter 22 mm. With multipurpose, POM (polyoxymethylene) glides in black for soft and hard floorings.

ON. Technical details.

Seat

Task chairs and conference/visitor chairs models 174/7, 175/7, 175/73, 175/8, 171/7, 176/7, 178/7, 174/71, 175/71, 171/71, 178/71

Very elastic, flexibly suspended seat shell with seat upholstery panel made of black or white, through-dyed polypropylene, polyurethane seat cushioning covered in the same material as the backrest cover in Fiberflex, or fabric.

The seat is replaceable.

All models optionally have seats with soft padding (with extra cut foam and facings at the sides).

In models with management grade upholstery (174/71, 175/71, 171/71), seat cushioning also with extra padding and side facings, optionally covered in leather too. Optionally with seat-depth extension from 40 to 45 cm (for all types of upholstery).

Model 175/73 with soft padding, as well as color-contrasting double seams and contrast stitching. Seat cushioning with side facings.

Task chair models 1174/7, 175/7, 174/71, 175/71 optionally with a constant comfortable 6-degree tilt. Constant comfortable tilt (6°) not combinable with a white version.

ON Casual task chairs, models 174/74, 175/74

Very elastic, flexibly suspended seat shell with seat upholstery panel made of black or white, through-dyed polypropylene, concave polyurethane seat cushioning covered in fabric or leather.

The seat is replaceable.

Optionally with a permanent comfortable 6-degree tilt. Constant comfortable tilt (6°) not combinable with a white version.

Backrest

Task chairs and conference/visitor chairs models 174/7, 175/7, 175/73, 175/8, 171/7, 176/7, 178/7, 174/71, 175/71, 171/71, 178/71

Elastic backrest frame, height adjustable by 60 mm in six lockable positions, made of through-dyed, fiberglass-reinforced polyamide, covered with Fiberflex, optionally also with fabric (and extra padding).

All models optionally with soft padding (with extra cushion thickness) made of additional cut foam fleece. For models with management grade upholstery, the backrest frame also optionally comes with back cushioning with extra padding and the front of the backrest also with a concealed, cut foam fleece sewn into the cover and with side facings, optionally with a leather cover.

Task and visitor chairs with medium height or high backrest, high backrest optionally with headrest (height 16 cm), either in the same material as the backrest cover, or covered with leather at the front. The backrest is replaceable.

Model 175/73 with soft padding, as well as color-contrasting double seams and contour-defining stitching.

ON Casual task chairs, models 174/74, 175/74

Elastic, three-dimensional backrest frame, height adjustable by 60 mm in six lockable positions, made of through-dyed, fiberglass-reinforced polyamide, covered with 36 Lines high-tech fabric, or 59 Cubes, 97 Mosaic or 74 leather.

The backrest is replaceable.



ON. Technical details.

Seat and backrest

Cantilever chair/four-leg visitor chair

Unitary shell-backrest component made of black or white through-dyed, fiberglass-reinforced polypropylene. Seat cushioning made of polyurethane one-piece molded foam, models with management grade upholstery (model 178/71) with extra padding and facings at the sides.

All models optionally with soft padding (with extra cut foam fleece). In models 176/7, 178/7 seat cushioning covered in the same material as the backrest cover in Fiberflex or fabric, in model 178/71 with management grade upholstery optionally also covered in leather. The seat is replaceable. The backrest frame is covered in Fiberflex, in models 176/7, 178/7 optionally with backrest covered in fabric (with additional padding).

In models with management grade upholstery optionally with backrest upholstery in fabric or leather, with additional padding, as well as on the front of backrest also with concealed, cut foam fleece sewn into the cover and side facings, backrest cover is replaceable.

Armrests

Task chairs

3D armrests made of fiberglass-reinforced, black or white through-dyed polyamide. Armrest pads made of black or gray, through-dyed polyurethane (TPU), optionally also made of black polyurethane foam and covered in leather if desired. Upholstered, leather-covered armrests (optional) in model 175/73 with color-contrasting stitching. Through-dyed black or white polypropylene armrest covers.

Conference/visitor chairs

Fixed armrests made of fiberglass-reinforced, black, through-dyed polyamide. Armrest pads made of black, through-dyed polyurethane (TPU), optionally also made of polyurethane foam and covered in leather if desired. Armrest covers made of black, through-dyed polypropylene.

Cantilever chair/four-leg visitor chair

Black or gray through-dyed polypropylene armrest pads. In the case of non-stackable chairs, optionally with upholstered armrests, when covered in fabric with black leather 74/99, when covered in leather to match the color of the leather.

Standards

The ON task chairs and visitor/meeting chairs comply with the type A or B DIN EN1335 office-chair, ANSI/BIFMAX5.1 and IGR standards. On request, NPR 1813 models are available.

The ON cantilever chairs and four-leg visitor chairs comply with the DIN EN 16139-L1 and ANSI/BIFMAX5 standards.



Accessories

Optionally, the ON task, visitor and conference chairs (without headrest) can also be shipped with dismantled backrests in boxes.

All visitor and conference chairs have glides for soft flooring (e.g. carpets). On request, available with swivel-mounted column, not height adjustable, (at no additional charge).

Optionally for cantilever chair, model 178/7, four-wheeled trolley, model 178 for 8 cantilever chairs.



ON. Environmental product information.

Certificates product/standards



Green Tick
Product
Certification



Blue Tick
Product
Certification

DIN EN 1335 ANSI/BIFMA X5.1

Not all certificates / standards apply to all types.

Company's certificates, memberships




Mitglied der
DGNB
Deutsche Gesellschaft für Nachhaltiges Bauen
German Sustainable Building Council



Wilkhahn and sustainability.



In over 100 years of its corporate history, Wilkhahn can look back on a sustainability philosophy that has grown over decades. Aspects such as durability, social fairness, environmental responsibility and cultural orientation have been evolving as corporate principles since the 1950s. Wilkhahn today is regarded internationally as a model of excellence, not only on account of its products but also because of its modern corporate philosophy. This is because the company realized early on that sustainable design should embrace environmental aspects, improve social relationships and define the cultural role of a company. This approach to the way we do business creates a bond between us and our customers throughout the world. There is surely no more rewarding task than working together for a successful future that is worth living in.

 [Current sustainability report
with environmental statement](#)



For further information please contact us!

Wilkhahn

Wilkening + Hahne GmbH+Co.KG

Fritz-Hahne-Str. 8
31848 Bad Münde
Germany
Tel.: +49 5042 999 100
contact@wilkhahn.de
www.wilkhahn.com



Roof of one of the four pavilions,
which were designed by architect
Frei Otto, on the Wilkhahn site.

Photo: Klemens Ortmeyer