



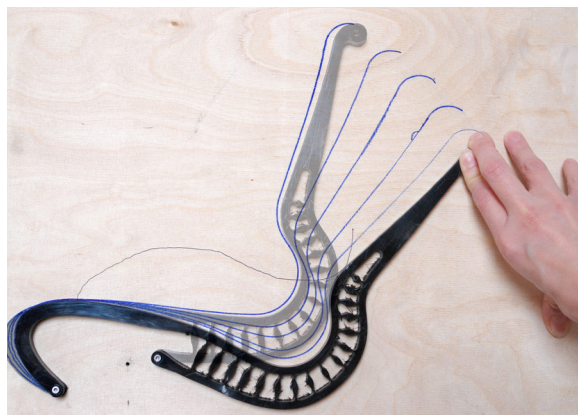
**Setu Chairs®**

# Setu

# Effortless comfort, anywhere

Designed by Studio 7.5

The Setu Chair's function and contours were shaped by the changing world around us. We work collaboratively in a variety of less formal spaces, moving around more and more throughout the day. As we're expected to work anywhere and everywhere, we need furniture that can keep up. Enter Setu.



The Kinematic Spine bends and flexes with every movement, responding to the natural ways your body moves.

## Bends and flexes with you

Setu features the Kinematic Spine, which uses two types of polypropylene to control resistance and support your weight as you recline. Without requiring adjustments, it bends and flexes with every movement – responding to your body's natural movements and providing the same experience from chair to chair.

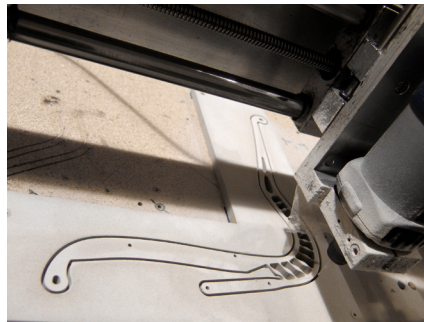






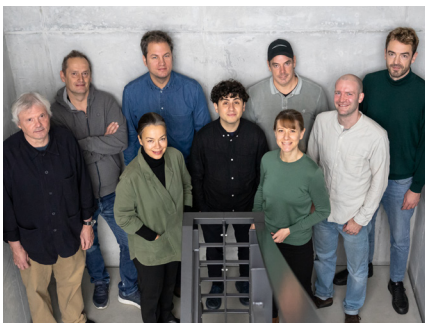






## Design

The typical task chair design story goes like this: start with an idea and shape it into the world around you. But in designing Setu, the Berlin-based Studio 7.5 flipped the script, letting the world around us shape the chair. It is inspiration through observation. Together with Studio 7.5, we combined design expertise with manufacturing excellence and studied, learned, asked questions and then relearned.



Studio 7.5

## About Studio 7.5

When Burkhard Schmitz and Carola Zwick started their design studio as a team of six in 1992, they were looking for the freedom to work on projects that interested them. And for the freedom from bosses and titles. “Everybody does everything,” says Schmitz, speaking for the group that also includes Carola’s brother, Roland Zwick. “That’s how we cultivate ideas and maintain our openness and curiosity.”

They find designing office chairs to be most rewarding and have worked with Herman Miller on the Setu Chair, the award-winning Mirra Chair, Mirra 2, Cosm and Zeph. “We define not only how the chair looks but how it performs,” Carola says. As to how these chairs perform for you, they provide comfort no matter how or where you sit.





Setu's Intercept Suspension adapts to your sitting bones, providing contouring comfort as well as aeration.



Setu features upholstery with a C-Layer Suspension, providing a degree of structural support.

## Seamless comfort

The Kinematic Spine works in concert with the breathable, temperature-neutral and durable Intercept Suspension – originally a Cosm innovation – for seamless comfort wherever you are. The upholstered Setu features a C-Layer Suspension that works with a variety of textiles, adding a degree of structural support to the fabric.

## Every molecule counts

Setu's dematerialised, environmentally sensitive design uses less material – only 8 kilos for the multipurpose chair – to support more people, up to 136 kilos. With only one adjustment for height and a bumper that protects and enhances the chair's aesthetic, it's been painstakingly shaped and reshaped to ensure that every molecule falls into the right place to deliver the desired comfort and functionality. Setu is a small chair with a big impact, proving that sometimes less really is more.



Every part of the Setu Chair was painstakingly shaped and reshaped to ensure that each molecule falls into the right place to deliver the desired functionality.



## Seamless support for any space

From the graceful curve of its ribbon arms to the durable, silver alloy base, Setu's minimal design aesthetic and customisable nature let it blend in or serve as a focal point. With its dipped-in-colour option – one hue from top to bottom – Setu complements both a variety of spaces and other seating options like its fellow Studio 7.5-designed Cosm Chair. Its only adjustment controls the height, so anyone who uses Setu can make one quick change, experience ergonomic support and get to work.





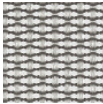
# Materials

## Setu Chairs

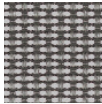
### Suspension

Intercept

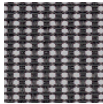
Price Category 1



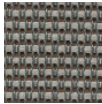
Mineral  
84503



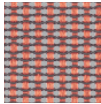
Carbon  
84502



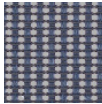
Graphite  
84501



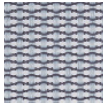
Cocoa  
84507



Canyon  
84506



Nightfall  
84504



Glacier  
84505

### Frame and arm finishes



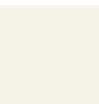
Graphite  
G1



Carbon  
CRB



Mineral  
VPR



Studio White  
98

### Base/linkage finishes



Graphite  
G1



Silver Alloy  
L7



Semi-polished  
5Y

### Dipped in Color

#### Suspension

Intercept

Corresponding  
frame/linkage  
finish

Corresponding  
Chassis/Base  
finishes

Price Category 1



Nightfall  
84504



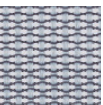
Nightfall  
DN2



Nightfall  
DN2



Semi Polished  
5Y



Glacier  
84505



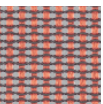
Glacier  
DB3



Glacier  
DB3



Semi Polished  
5Y



Canyon  
84506



Canyon  
DR1



Canyon  
DR1



Semi Polished  
5Y

## Specs

**Family**  
Multipurpose Chair  
Side Chair  
Stool

**Overview**  
Maximum User Weight

300 lbs / 136 kg

**Seat Height**  
Multipurpose Chair  
Side Chair  
Stool

399-551 mm  
470 mm  
663-853 mm

**Arm Options**  
No Arms  
Fixed Arms

**Environmental Highlights**  
Recyclability  
BIFMA level  
SCS Indoor Advantage

Up to 90%  
3  
Gold

**Seat Depth**  
Fixed Seat

**Base Options**  
5-Star Base with Castors (Standard- or High-Height)  
4-Star Base with Glides (Fixed-Height only)

**Seat/Back Material**  
Intercept Suspension Optional  
Suspended Upholstery Optional





**For more information, please visit  
[hermanmiller.com](https://hermanmiller.com)**

Herman Miller, the Herman Miller logo, Zeph, Zeph by Herman Miller, Mirra, Mirra 2, Setu and Cosm are among the registered trademarks of MillerKnoll and its subsidiaries. All other trademarks are the property of their respective owners.

© 2024 MillerKnoll  
All rights reserved.